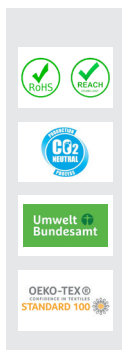


COMMITMENT TO QUALITY BY ARTIS

Requirement To International Production And Productpurchase



Environmentally Friendly Production
Sustainable Creation Of Value
Optimising Of Transport
Climate And Energy-Conscious
Absence Of Pesticides
Ecological Products
Saving Of Resources



Branded Products For Brands
Qualitymanagement
Acceptable Quality Limit
Europ. Quality Understanding
Controlling Of Ongoing Productions
Controlling By SGS Or TÜV

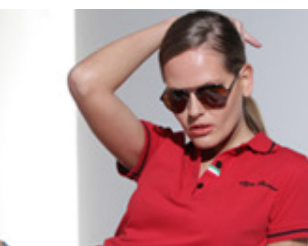


Good Working Conditions
Consistent With Human Rights
Work Safety
Employee Promotion
Fair Payment
Business Training
Anti - Corruption



According To Product Safety Law
Inspection Of Functionality
CE-Conformity
Inspection Of Pollutants
Norms Of Toys EN 71
Inspection Of Foods
GS-Certified Security





INTERNATIONAL PURCHASE BY ARTiS

Sources Of Purchase

**Long-Standing Productionpartners
In Europe And Asia**

**International Markets
Long-Standing Businesspartner**

European Wholesale

Brand Manufacturer

International Markets - New Suppliers



PRODUCT



ARTiS Catalogue Of Measures

Specification Of Quality Factors

Inspection Of Legal Norms

Selection Of Suppliers

Valuation Of Suppliers

Purchase Of Samples Until Approval

Auditing Of Producer

Tests Of Used Materials

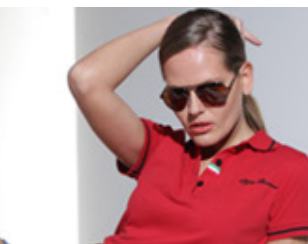
Approval Of Production Launch

Inspection Of Productions In Progress

Final Inspection / Pre-shipment inspection

Incoming Inspection

Documentation



PRODUCTION STANDARDS

Conventions of ILO „International Labour Organisation“

- Freedom of association and rights for collective negotiations.
- Elimination of forced labour and child labour.
- Prohibition of discrimination in employment and work.
- Dignified employment and remuneration.
- Social security strengthening.
- Strengthening the dialogues between social partners.



The ILO conventions are NOT persuasive, because there are no certifications!

SA 8000 is the certified section of ILO conventions

Social Accountability

- Warranty of health and security at work.
- Elimination of discrimination and prohibition of child labour.
- Cross-border limitation of maximal labor hours.



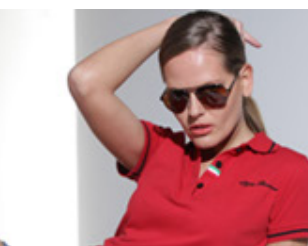
BSCI is a country-specific certification according to ILO conventions

Business Social Compliance Initiative

- Labor hours and overtime provisions are in accordance to national laws.
- Payments of lawful minimum or sector-related remuneration.
- Elimination of discrimination and prohibition of child labour.



- Purchase in Italy, China, Turkey, Romania, Hungary, Portugal, India, ...
- These suppliers must have minimum SA 8000 certification and 98% of them have BSCI or similar standards.



PRODUCT SAFETY

| Requirements | | Guarantee Of Requirements | | | |
|--------------|----------------|--|---|--------|---|
| | Product Safety |  |  | ProdSG |  |

REACH

Self-commitment of industries and importers to verify, that chemical ingredients are just contained in the defined range. Actual ingredients 144!!!

Textiles:

Information of raw materials: percent in weight; children's clothing; DIN EEN 14682

Toys:

CE-marking; EN 71; toys, warnings for children under 3 years, if necessary detailed installation instruction

Synthetic product:

CE-marking; if necessary „Food-Safe“- marking

Electro products:

RoHS; CE-marking;

USB-sticks:

Gema charge: 0,30 € per piece

Inflatable articles:

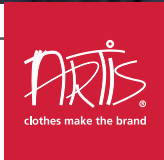
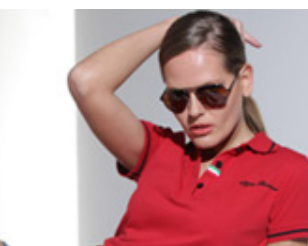
CE-marking; EN 71;

Magnetic products:

Warnings: „Warning! This toy contains magnets or magnetic parts. Magnets in human bodies...“

....

There are clearly defined regulations the „distributing company“ (manufacturer or importer) must comply with. Additional to local inspections ARTiS recommends inspections in german institutions for example TÜV- Süd.



ENVIRONMENT & SUSTAINABILITY STANDARDS

RoHs & Reach

- RoHs - Controls the limited usage of dangerous contents for electronic devices.
- Reach - Valuation and admission of chemical ingredients.



ÖkoTex 100

- Catalogue of criteria for pollutant test based on latest perceptions, without curtailments in functionality and product care.
- Inspection criterias and methods have an international standard.



GOTS

- GOTS is the only world wide used standard for processing textiles with biological produced natural fiber.
- Defines environmental requirements during the whole textile production chain, as well as social criteria.



GRS

- GRS pursues the goal to raise the usage of recycled materials in products.
- GRS comprises requirements of used additives at GRS products as well as environment-management and social responsibility standards in companies.

